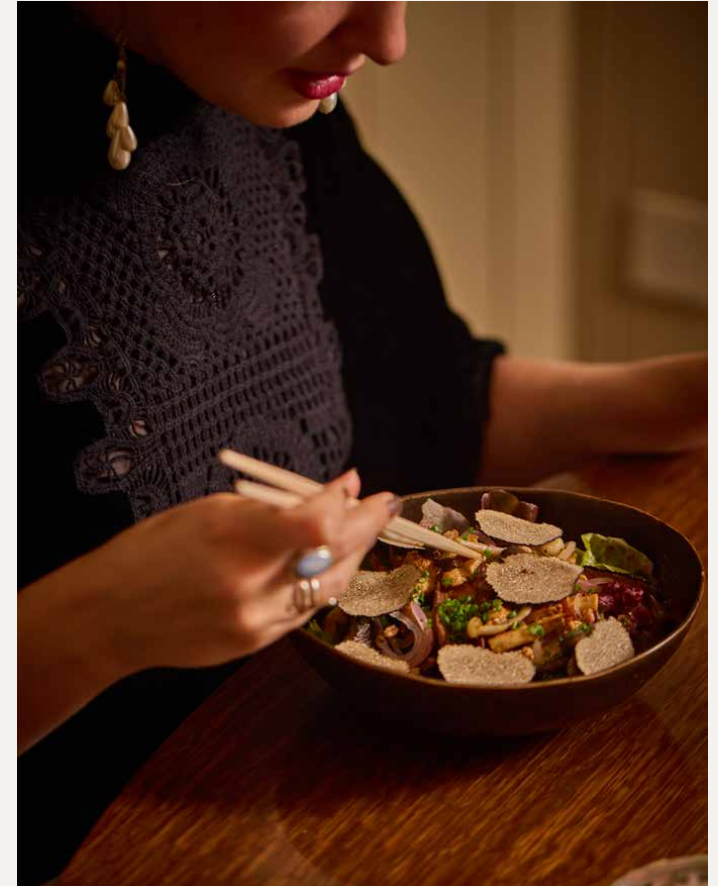


CHRISTMAS
AT
NIJŪ
LONDON

20 BERKELEY STREET,
MAYFAIR, LONDON, W1J 8EE



NIJŪ is the ideal location for hosting memorable occasions. Our versatile venue provides a range of stunning spaces that can be tailored to suit your specific needs, such as Migi & Hidari rooms, Nipperkin bar, private dining room, and even the option to book the entire venue for a truly exclusive event for a standing canape reception or seated meal.





Whole Venue

UP TO 185 STANDING



Hidari

SEATED: UP TO 60 | STANDING: UP TO 100



Migi

SEATED: UP TO 60 | STANDING: UP TO 100



Private Dining Room

SEATS UP TO 18

We offer an array of private dining options that include bespoke flower arrangements, screen access for presentations, dedicated staff members, a private drinks trolley and use of the speaker system to play your own music.

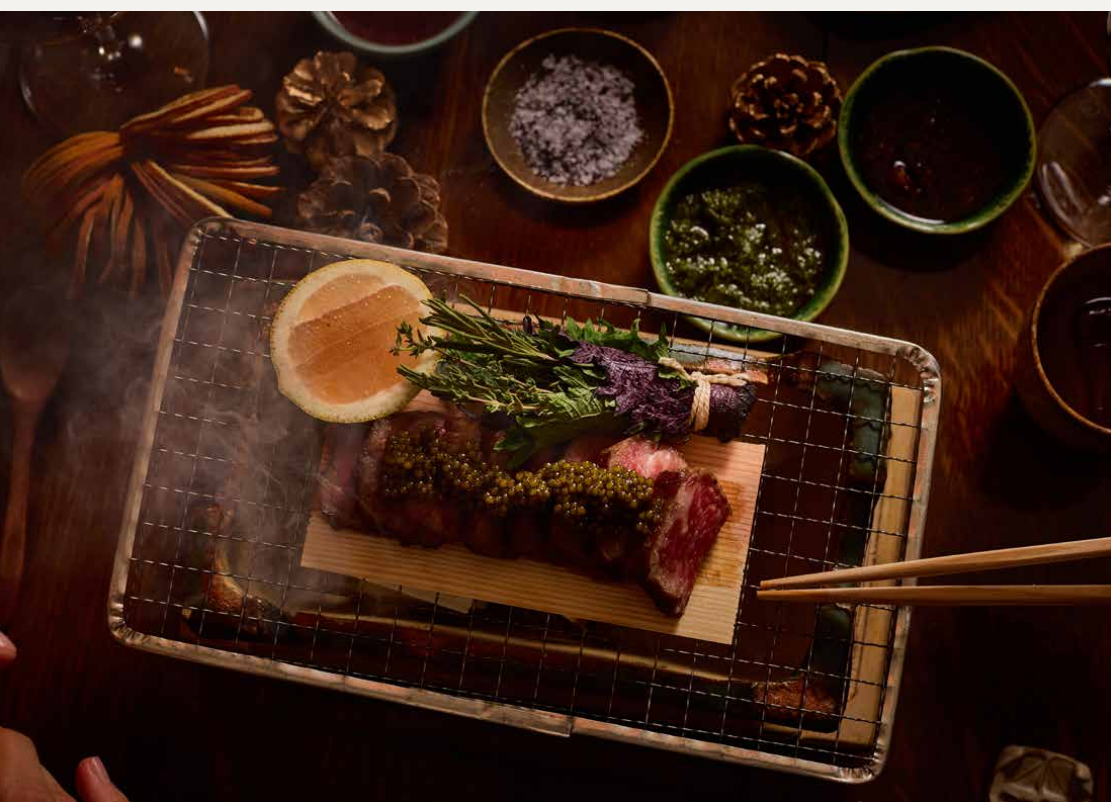


Nipperkin

AT NIJŪ

STANDING: UP TO 25

Situated on the lower-ground level, Nipperkin welcomes guests into a hideaway for expertly mixed cocktails and drinks, enjoyed around a centralised table. This unique venue offers not only an inviting atmosphere but also an innovative and unprecedented spirit-tasting experience.



NIJŪ will be a dining destination offering 'Katei Ryori' style cooking, meaning 'home cooked food' in Japanese, informal yet decadent, serving an array of Japanese delicacies. The restaurant is ingredient led and prides itself on creating dishes using seasonal produce and culinary experimentation.





CONTACT US:

events@nijulondon.com

20 BERKELEY STREET, MAYFAIR, LONDON, W1J 8EE

+44 (0)20 3327 3691